

PIPELINE

MICHIGAN ASSOCIATION OF COUNTY DRAIN COMMISSIONERS

MANAGING MICHIGAN'S WATER RESOURCES SINCE 1899

IVES DRAIN

2025 Innovation & Excellence Winner

—

BROADBAND UPDATES

—

HELPING POLLINATORS WITH NATIVE SEEDS

—



WE DO THE **HEAVY LIFTING** SO YOU DON'T HAVE TO

ANN ARBOR, MI
3 boxes installed in
under 34 hours to keep
the railroad running

**Precast Concrete Products
can carry the load!**

- Cooper E-80 Railroad Loading
- Elliptical Pipe Up to 120" Equiv.
- RCP Up to 14' ID
- Box Culverts Up to 28' Span
- 3-Sided Bridges Up to 48' Span
- Deep Burial Structures
- Custom Designs & Fabrications
to Meet Your Load Requirements

NORTHERN CONCRETE PIPE



DURABLE, RESILIENT INFRASTRUCTURE

Call **NORTHERN CONCRETE PIPE, INC**
800.222.9918 | www.ncp-inc.com

CONTENTS

Michigan Association of County Drain Commissioners Executive Board Members

Michael Hard, **President** Branch County
517-279-4310 mhard@countyofbranch.com

Elmeka Steele, **First Vice-President** Wayne County
313-224-3620 esteele@waynecounty.com

Larry Protasiewicz, **Second Vice-President** Mason County
231-757-9366 lprotasiewicz@masoncounty.net

Bernie Barnes, **Secretary** Gratiot County
989-875-5207 bbarnes@gratiotmi.com

Dara Hood, **Treasurer** Tuscola County
989-672-3820 drain-commissioner@tuscolacounty.org

Brian Wendling, **Immediate Past President** Saginaw County
989-790-5258 bwendling@saginawcounty.com

Joe Bush, **Legislative Committee Chair** Ottawa County
616-994-4530 jsbush@miottawa.org

Andy Smits, **Northern District Chair** Grand Traverse County
231-922-4807 asmits@gtcountymi.gov

Erik Tamlyn, **Northeast District Chair** Huron County
989-269-9320 etamlyn@hcroads.com

Todd Sattler, **Northwest District Chair** Montcalm County
989-831-7322 tsattler@montcalm.us

Matt Word, **Southeast District Chair** Hillsdale County
517-437-4181 m.word@co.hillsdale.mi.us

Joe Parman, **Southwest District Chair** Van Buren County
269-657-8241 parmanj@vanburencountymi.gov

Paul Altobello, **Upper Peninsula District Chair** Marquette County
906-362-6404 paltobello@mqtco.org

- 4 PRESIDENT'S MESSAGE
- 6 PEGGY SNYDER RECEIVES DARWIN MCLEOD AWARD
- 9 2026 INNOVATION & EXCELLENCE AWARDS OPEN
- 10 YPC UPDATE
- 11 MAINTENANCE LIMIT LEGISLATION SIGNED
- 13 NEW FACES: MEET OUR NEWEST DRAIN COMMISSIONERS
- 16 CITY OF CLARE RECOGNIZES CARL PARKS LEGACY
- 18 IVES DRAIN PROJECT TRANSFORMS BIG RAPIDS, TACKLING DECADES OF EROSION
2025 Innovation & Excellence Winner
- 25 BROADBAND FOR ALL
- 28 HELPING POLLINATORS THRIVE: HOW TO ACHIEVE EFFECTIVE HABITATS
- 32 ASSOCIATE MEMBER NEWS
- 33 CALENDAR
- 34 THANK YOU ADVERTISERS

Cover Photo Credit: Spicer Group, Inc.

No part of this publication may be reproduced without permission of the publisher and the MACDC. All articles submitted will be considered for publication and accepted at the approval of the editor and the **PIPELINE** Committee. The editor reserves the right to edit submissions for accuracy, clarity and length.

PIPELINE is published four times a year. It is funded by the Michigan Association of County Drain Commissioners, and with advertising revenues. The Michigan Association of County Drain Commissioners is a nonprofit, statewide association.

PIPELINE EDITOR GCSI Association Services

COMMUNICATIONS COMMITTEE

Erik Tamlyn, Chair Mariel Dunn
Laura Bassett Paul Forton
Trisha Bruzek Cheryl Nodarse
Lauren Burton Hillary Waliliko

CONTACT FOR ADVERTISING INFORMATION

120 N. Washington Sq., Suite 110A, Lansing, MI 48933
Phone: 517-484-9761, Fax: 517-371-1170

PRESIDENT'S MESSAGE

Michael Hard
Branch County Drain Commissioner



Greetings everyone,

The 125th Annual summer Conference of the Michigan Association of County Drain Commissioners was held at Shanty Creek in Bellaire, Michigan on July 16-18. The conference was filled with informative programs and fun activities. I would like to say thank you to the program committee, the presenters, GCSI, the young professionals, associate members and sponsors for making the summer conference a spectacular success. A special congratulations to Peggy Synder for receiving the Darwin McLeod Award, which is much deserved.

Summer means boats. Boats mean lake levels. Almost every Drain Commissioner has stories about the lake levels. We discussed many of these stories over dinner at the conference. The calls from the same lake on the same day. One saying it is too high and the other saying it is too low. That is why lake levels are court ordered. Our job is to keep them as close to the court ordered level as possible. I think the best story was from the lady who said I know that the other side of the lake is low, they would be flooded if you raised the lake, but we are having a party this weekend and it would really help if you could raise our side of the lake about six inches, wouldn't that be something.

If you are not familiar with the monitoring equipment for lake levels that is available, you may want to check into it. This allows you to check the levels 24/7 from your computer or phone or however you choose to set it up. This enables you to make adjustments quickly.

Assessing season is ahead for the Winter Tax Bills. As most of you know when the property owners receive their tax bills and see the Special Assessment for a drain on the bill, the telephone calls begin. It is our job to explain the benefits to the property, how a watershed is engineered and what work was done on the drain.

Now on to politics, I strongly urge each of you to stay in touch with your State Legislators and stay apprised of the legislation going on in Lansing pertaining to all things concerning the Drain Offices. Many Departments in the State of Michigan are trying to get legislation passed through that can be very concerning.

I am looking forward to seeing each of you at the winter conference this next year.

Sincerely,

Mike



Bendzinski & Co.
MUNICIPAL FINANCE ADVISORS

A MICHIGAN FIRM, WORKING FOR MICHIGAN.

Registered Municipal Advisor with the Security and Exchange Commission (the "SEC") and the Municipal Securities Rulemaking Board (the "MSRB") offering professional expertise in the following areas:

Drain Project Financing

Continuing Disclosure Services

Official Statement Preparation

Rating Agency Preparation

Refunding Analysis

Drain Note Financing

Serving municipal bond and note issuers for over 44 years

Bobby Bendzinski (Life Member)
(313) 961-8222 Ext. 1
rbendzinski@bendzinski.com

Stephen Hayduk
(313) 961-8222 Ext. 2
shayduk@bendzinski.com

Info@Bendzinski.com (313) 961-8222 www.Bendzinski.com
17000 Kercheval Ave., Suite 230, Grosse Pointe, Michigan 48230

PEGGY SNYDER RECEIVES DARWIN MCLEOD AWARD

At the summer conference, MACDC presented Peggy Snyder, Departmental Analyst for the Michigan Department of Rural Development, with the prestigious Darwin McLeod Award.

The esteemed award recognizes individuals who have gone above and beyond in their service to the MACDC, demonstrating exceptional leadership, dedication, and contributions that significantly advance the organization's goals.

Snyder started with the State of Michigan in 1996 and has been working with the Intercounty Drain Program since 1999. As Departmental Analyst she is responsible for moving and maintaining the ICD records into an electronic form.

As an example of her dedication to MACDC, Snyder has run the Silent Auction since 2013, along with the 50/50 raffle. In fact, she has helped raise over \$150,000 for the association.



Peggy and MACDC Past President Brian Wendling after receiving her award

"I have met Darwin McLeod and would describe him as charismatic, and a leader who has had a positive influence on so many people," Snyder said. "It was truly a surprise and an honor to receive the Darwin McLeod Award. It is my

pleasure and joy to serve MACDC's membership, and I hope to continue to give back to this association for many years to come."

Brady Harrington, Vice President - Central Region for Spicer Group, said Snyder has contributed countless hours to her craft.



Surrounded by boxes during MDARD's scanning project

"I've known Peggy for nearly 30 years and had the privilege of working with her for the past 14+ years," he said. "She has made herself an asset to MACDC. She is deserving of the McLeod Award, and I am honored to call her a friend."

Snyder has formed relationships with Drain Commissioners and staff alike and is truly family to MACDC, said Dara Hood, Tuscola County Drain Commissioner.

"My kids have fully embraced it and now call her grandma," Hood said. "She answers to it faster than her real name and has officially taken on the role, complete with chocolate covered strawberries and unsolicited life advice. Peggy has been running the 50/50 raffle and silent auction so smoothly for years, we're convinced she's secretly a magician."

McLeod, former drain commissioner of St. Clair County who has worked with, and for, 40 counties in the state, dedicated more than 50 years to MACDC. Known for being professional, courteous, friendly, and helpful to members, McLeod always strived to improve the industry and assist colleagues with his candid and plainspoken advice, said Michael Quaine, senior project engineer for BMJ Engineers and Surveyors, shortly after the award was created 20 years ago.

The award honors McLeod's wisdom, commitment and enthusiasm through more than 50 years of involvement with MACDC.



Peggy with her 50/50 raffle partners in crime



The MDARD Intercounty Drain team at the site of the Sanford Dam site in October 2024
(L to R: Peggy, Mike Gregg, Brady Harrington, Joe Brezvai, Joy Myers, and Ken McFarlane)



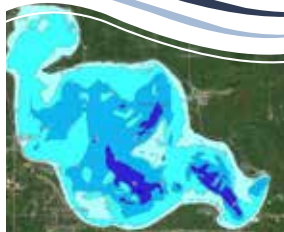
WE DELIVER SOLUTIONS
YOU CAN STAND BEHIND

800.482.2864
www.wadetrim.com

Restorative
Lake Sciences™



Evaluate. Revitalize. Restore.



RLS Limnological Services:

- Water quality monitoring & data analysis
- Aquatic vegetation surveys & biovolume scans
- Aquatic vegetation management plans
- Oversight of aquatic herbicide treatments
- Bathymetric contour mapping
- Algal monitoring, identification, & management
- Fishery studies & stocking recommendations
- Benthic macroinvertebrate surveys
- Muck evaluation studies & reduction programs
- Lake aeration efficacy evaluations
- Watershed mapping, critical source analysis, and nutrient reduction plans, mitigation
- Lake improvement feasibility studies & management plans
- Dredging feasibility studies
- Zooplankton sampling and microscopic imaging
- Mass balance/nutrient loading studies & reduction plans
- Erosion control and storm water management plans
- Community engagement with Lake Engage® Program
- Sustainable self-management with Lake Sustain® Program

www.restorativelakesciences.com • 616.843.5636



Serving Michigan Governmental
Clients as Bond Counsel For
MORE THAN 100 YEARS

■ **Steven
Mann**



+1.313.496.7509
mann@millercafield.com

■ **Patrick
McGow**



+1.313.496.7684
mcgow@millercafield.com

■ **Steven
Frank**



+1.313.496.7503
frank@millercafield.com

■ **Alan
Szuma**



+1.313.496.7604
szuma@millercafield.com

Providing Bond Counsel and Specialized
Legal Services to Drain Commissioners
Throughout the State

**MILLER
CANFIELD**

millercafield.com/PublicLaw

2026 MACDC

Innovation & Excellence Awards

Project submittals now open!

Pre-application Entry Form must be received by **5:00 PM, November 1, 2025**

Complete applications are due by **5:00 PM, December 1, 2025**

Application is available at <https://macdc.us/awards>

Awards Program | Rules and Procedures

Purpose and Goals

This Awards Program aims to:

- Recognize creative and innovative accomplishments of all scopes, sizes, and budgets, of Members and Associate Members of the Michigan Association of County Drain Commissioners (MACDC).
- Promote public awareness of the activities and contributions of MACDC, its Members and Associate Members.

Eligibility

Any MACDC Member or Associate Member may enter this Awards Program. Drain Commissioner(s) and/or Associate Member(s) may submit projects jointly or separately. Associate Members submitting separately must obtain the signature of the Drain Commissioner of record on their Entry Form.

Award Categories

MACDC's panel of judges will review submittals. Two projects will receive an *Innovation and Excellence* award. MACDC will provide one award for each winning project; recipients may purchase additional copies of the award. MACDC may also award Honorable Mention certificates to a maximum of two projects.

General Criteria

1. All entries must be submitted in accordance with the rules outlined in this document.
2. The project must have been conducted under the direct authority of the Drain Commissioner or through a Board of which the Drain Commissioner is a member.
3. A Member or Associate Member may enter as many qualified projects as they wish.
4. Projects that have received awards from other organizations may be entered.
5. Projects must have been completed and in use between April 1, 2023 and December 31, 2025.
6. Entries must comply with Submission Guidelines section of this document. Failure to comply may disqualify an entry. Please read the Guidelines thoroughly.
7. MACDC Awards Committee reserves the right to determine entry eligibility.
8. MACDC Awards Committee determines the Award Category based on submitted information.

Judges and Judging Criteria

The MACDC Awards Committee will evaluate entries based on the work completed by the entering organization(s). Finalists and winners are selected based on overall project excellence. Judges will evaluate and compare projects based on the following.

Judging Criteria (*in no particular order*):

1. Public involvement and education
2. Environmental and water quality benefits
3. Use of new materials
(including improving/finding new uses of existing materials)
4. Use of new technologies
(product/method/tool to solve problem)
5. Innovation
6. Complexity
7. Cost effectiveness

Note: Projects need not contain all seven of the above criteria. However, the more criteria that a project effectively encompasses, the greater consideration it will be given.

****Electronic submissions are preferred*****

Email Entry Form and Final Application packet to: admin@macdc.us

Questions?

Contact MACDC at **517-484-9761** or admin@macdc.us





YOUNG PROFESSIONALS COMMITTEE

The MACDC YPC hosted its first Survivor games at the 2025 summer conference in Bellaire! The four districts of Northeast, Southeast, Northwest, Southwest competed in three competitive rounds of trivia, puzzle solving, and YPC version of tribal council. It was a close race going into the final round of tribal council with the Southeast district trailing, but in the end, they prevailed by winning three of the five rounds to claim the title of Sole Survivor!

One of the objectives of the YPC is to welcome new members to the drain conference and ensure they have a positive introduction. At this summer's conference, we were pleased to welcome two engineers from Wade Trim to both the YPC and their first professional conference experience. Morgan Comfort and Allison Kelly generously shared their insights regarding participation in the YPC and attendance at the conference.

Morgan: "The MACDC Summer 2025 Conference was my first opportunity to attend a professional conference. Naturally, I was nervous as a recent college graduate and new hire, with no idea what to expect.



Comfort

However, in the days leading up to the conference, I found that the members of the YPC were extremely welcoming and quick to offer advice. On my first night at the conference, I was introduced to several YPC members and joined in a friendly round of euchre. By the next morning, I was already encouraged to participate in the group's semiannual conference presentation. My feedback was taken into account during the dress rehearsal, and I even got to take part in the group's presentation

activity. This gave me the opportunity to meet even more people and to build relationships that I believe will be valuable throughout my career. It also helped boost my confidence in navigating professional environments."

Allison: "I had only been working full time for about 6 months before I got to attend the MACDC conference. I was so excited to get the opportunity to attend a conference so early in my career. Considering this was my first conference experience I had no idea what to expect. It is very intimidating to walk into an



Kelly

environment where most people know each other. That is why YPC was such a big help for me. I got to attend a planning meeting prior to the conference which allowed me to meet a few YPC members. This provided me with a few people that I could gravitate towards in the large group setting of the conference. Even knowing a few people made the whole conference less intimidating for me."

Both Allison and Morgan felt the YPC provided a supportive network to introduce themselves to the conference. The conference also allowed them to network with diverse professionals and gain a clearer sense of career growth in the engineering field.

The YPC will be hosting its Fall social event in October. If you would like to get involved in YPC, attend our Fall social event, or help with drain conference events, please contact Tanner Kragenbrink at tkragenbrink@wadetrim.com.

MAINTENANCE INCREASE LIMIT LEGISLATION SIGNED BY GOVERNOR

This past January, after a multi-year effort by MACDC and various partners, Governor Gretchen Whitmer signed House Bill 5188 into law, making it Public Act 237 of 2024. The legislation, which amends Michigan's Drain Code, aims to improve the maintenance and repair of the state's drainage infrastructure.

Key Provisions of the Bill

The new law increases the amount that a county drain commissioner or a drainage board can spend annually on drain maintenance and repairs without requiring a public petition. This limit has been raised from \$5,000 per mile of drain to \$10,000 per mile. The act also includes a provision for this cap to be adjusted annually based on the Consumer Price Index, ensuring the funding keeps pace with inflation. The Michigan Department of Agriculture and Rural Development (MDARD) will post and maintain the adjusted limit on its website.



The official bill signing in May with (l to r) MACDC Past President, Brian Wendling, Governor Whitmer, and bill sponsor, Representative Amos O'Neal.

Preserving our lakes today for our generations **Tomorrow.**

Have a dredging project?



Need a Drone Application?



Looking for a company to manage your lake or pond?

WE CAN DO THAT!

- 🌲 Lake & Pond Management
- 🌲 Aquatic Weed Control
- 🌲 Custom Aeration Systems
- 🌲 Water Quality Consulting
- 🌲 Lake & Pond Dredging
- 🌲 Aerial Drone Application
- 🌲 Decorative Fountains
- 🌲 Aquatic Weed Harvesting



Savin Lake Services has recently completed the acquisition of our dredging partner, Alcona Dredge, which make us the only lakes management company in the State of Michigan that can also integrate lake dredging projects!



LAKEANDPOND.COM
877-SAV-LAKE

NEW FACES

Meet Michigan's Newest Drain Commissioners

Editor's Note: With over 20 new drain and water resource commissioners elected or appointed for 2025, we have a lot of new faces. We will be featuring several commissioners in each issue of Pipeline throughout 2025.

PAUL ALTABELLO Marquette County Drain Commissioner

How will your experience and background help you in your new role?

Over my 40 years in the water environmental field and pipeline construction I have had a variety of experiences: installing pipes ranging from six-inch PVC to 96-inch concrete pipe; removing heavy metals from contaminated water; televising sewer lines and operating wastewater plants for the past 34 years, retiring as the Director of the Ishpeming Area Wastewater facility. My overall experiences have always included working with water one way or another.

What are you most looking forward to in this role?

Helping the county and its residents with their water issues and making any possible improvements.

What inspired you to be a leader for improving drains and/or water resources?

My love for the outdoors and helping people. I just wanted to do my part in improving the environment and water resources.

What challenges does your county face as it relates to functions of the Drain Commissioner?

As we all know, funding is always number one and trying to keep up with changing neighborhoods and construction.



Altobello

ANTHONY STACKPOOLE Chippewa County

How will your experience and background help you in your new role?

I was first elected Drain Commissioner in 2016. I didn't run again in 2020 as I sought a role on the County Commission and then due to a death was appointed Drain Commissioner in January 2023. I was re-elected in 2024. I've run a successful small business for 28 years and feel those skills help me as the county's Drain Commissioner.

What are you most looking forward to in this role?

I look forward to networking with peers as I work towards care and maintenance of the county's one existing drain field.

What inspired you to be a leader for improving drains and/or water resources?

Water is life yet the American economic machine still needs equal standing as we balance both.

What challenges does your county face related to functions of the Drain Commissioner?

I feel no immediate challenges regarding the office.



Stackpoole

NEW FACES CONT.

GRETCHEN DRISKELL Washtenaw County



Driskell

How will your experience and background help you in your new role?

I served as a local elected official for 20 years and 4 years as a state representative.

This helps me understand the different roles and opportunities for collaboration in our county/region, state, and federal level. During that time, I worked on regional issues, such as infrastructure investment and land use planning.

What are you most looking forward to in this role?

Thanks to the prior leadership of Evan Pratt and Janis Bobrin we have a great team in our department. I am looking forward to working with them and other decision-makers to maintain

a high level of service, protect our water quality and develop innovative solutions to the challenges that lay ahead.

What inspired you to be a leader for improving drains and/or water resources?

Protecting our natural resources, especially our waters, is very important to me. The opportunities to have a positive impact on regional issues and help our residents have always been a primary motivator for all the work I do.

What challenges does your county face related to functions of the Drain Commissioner?

As we continue to have more extreme rain events we need to adapt our policies and programs. We are developing more robust infrastructure using planning tools like green infrastructure. Funding large infrastructure projects is challenging.

Cadillac Culvert, Inc.

- Corrugated Metal Pipe
- Underground Detention
- Pond Control Devices
- Structural Plate
- Specialty Fabrications

5305 Highway M-115
Cadillac, MI 49601
Bus (231) 775-3761
Fax (231) 775-0072
www.cadillacculvert.com

Jensen BRIDGE & SUPPLY CO.

- Corrugated Steel Pipe
- CSP Detention Systems
- Steel and Aluminum Structural Plate and Box Culverts
- Steel Fabricators
- Geotextile Fabric
- Waterman Gates
- Guard Rail

400 Stoney Creek Drive, Sandusky, MI 48471
Phone: (810) 648-3000 Fax: (810) 648-3549
www.jensenbridge.com

WOODY INVASIVES

Controlling invasive plant species is necessary to prep sites for butterfly & rain gardens & to restore habitats! WINTER is the ideal time to target woody invaders such as buckthorn – winter 20% OFF discounts through March!

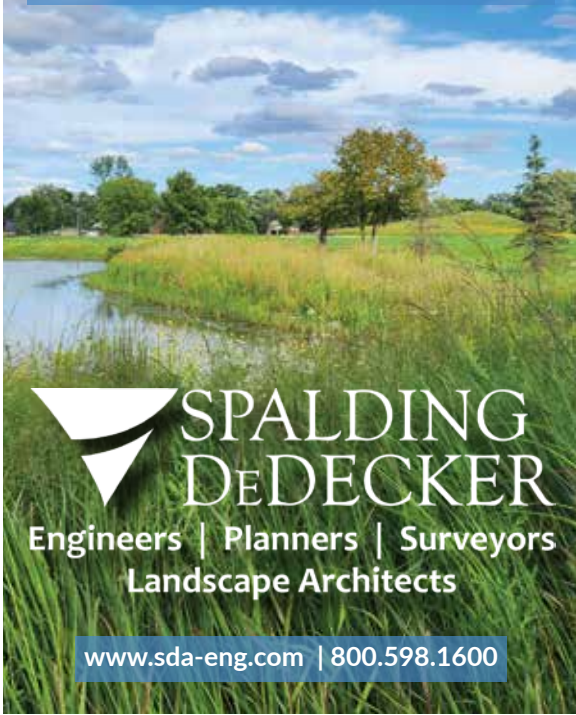
John DeLisle - CERP, Principal Ecologist Ph: 248-672-7611

NaturalCommunityServices.com

Email: john@naturalcommunityservices.com



Smarter Infrastructure,
Greener Future.



**SPALDING
DEDECKER**
Engineers | Planners | Surveyors
Landscape Architects

www.sda-eng.com | 800.598.1600

HRC



HUBBELL, ROTH & CLARK, INC
248.454.6300 | HRCENGR.COM



SERVICES

- Civil Engineering
- Surveying
- Landscape Architecture
- Aerial Imagery/Mapping
- Planning

(800) 837-9131
www.rowepsc.com



LOCATIONS

Flint (HQ) • Lapeer • Farmington Hills • Kentwood
Mt. Pleasant • Oscoda • Grayling • Myrtle Beach, SC



Recent MACDC Innovation & Excellence Awards:

- 2020 Selkirk Lake Drain (Allegan Co.)
- 2022 Cloverdale Drain (Barry Co.)
- 2024 Lake Bluffs Drain (Leelanau Co.)

Full-service Experts in County Drain & Water Resources Work
Innovative & Practical Stormwater Design
Ecological, T&E Species Review & EGLE Permitting
Geotechnical & Site Assessments
Surveying & Construction Oversight
Drain Maintenance/Clearing

GEICONCONSULTANTS.COM

CITY OF CLARE DEDICATES CARL PARKS LEGACY

This past summer the City of Clare dedicated the Sixth Street Bridge in memorial to former Clare County Drain Commissioner, Carl Parks. The bridge was dedicated as part of the Little Tobacco Drain Project which was a 2023 Innovation & Excellence winning project.

Parks had served as drain commissioner for 14 years when he passed in 2023. The Little Tobacco project was a culmination of over 35 years working for Clare county in many capacities.



Close up of the memorial sign



William Faber, Clare County Drain Commissioner (L) and David Parks, Brother of Carl Parks (R) pose next to the sign



Carl's family and friends with city and county officials at the bridge dedication



TETRA TECH



Leading with Science[®]
to improve people's lives



CLEAN, SAFE WATER FOR A COMPLEX WORLD

Tetra Tech provides innovative, sustainable solutions for every phase of the water cycle, including floodplain and stormwater management.

ANN ARBOR
734.665.6000

BRIGHTON
810.220.2112

DETROIT
313.964.0790

EAST LANSING
517.316.3930

tetrattech.com



Ives Drain Project Transforms Big Rapids, Tackling Decades of Erosion

By: John Koltvedt, Spicer Group

The Ives Drain Establishment and Improvement Project in Mecosta County is complete. This ambitious effort, led by Mecosta County Drain Commissioner Karla Miller, has transformed a problematic natural watercourse into a robust, stable county drain, addressing severe erosion issues that have plagued a Big Rapids neighborhood for decades while eliminating additional erosion from depositing in the Muskegon River.

Since the 1950s, Big Rapids has evolved from a quiet agricultural town into a vibrant community, home to Ferris State University. On the city's east side, a natural watercourse running between Ives Avenue and the Muskegon River became a growing concern. As urbanization increased, with minimal stormwater detention, energy increased in the stream, altering the landscape and eroding the channel and large bluffs.

Increased runoff from Ferris State, Big Rapids Charter Township, and the City of Big Rapids created a high-energy stream that carved away at the banks, destabilizing the area. Over time, this led to severe erosion, with massive amounts of sediment washing into the Muskegon River, threatening homes, and compromising infrastructure. By the 1980s, the erosion was so severe that landowners along Ives Avenue feared losing their homes. Some attempted to stabilize the banks themselves, but the fast-moving water continued to erode the land, exposing city sanitary sewer lines and laterals. Despite temporary fixes, including relocating the sewer lines in the early 2000s, the relentless



2025 Innovation & Excellence Winning Project

The Ives Drain in Mecosta County post construction



IVES DRAIN CONT.

stream uncovered them again. The sediment carried downstream formed a delta in the Muskegon River, depositing phosphorus and nutrients that had the potential to disrupt aquatic habitats.

In 2016, the City of Big Rapids hired Spicer Group to conduct a comprehensive study and maintenance inspection of the watercourse. By 2019, frustrated landowners petitioned the Mecosta County Drain Commissioner, leading to the formal establishment of the Ives Drain under the Michigan Drain Code. This critical step created a drainage district and an assessment framework to fund improvements, providing a structured approach, that wasn't previously available, to tackle the long-standing issue. The Drain Commissioner assembled a skilled team, including Spicer Group, Streamside Ecological, and Fahey Schultz Burzych Rhodes, to design the project, secure necessary easements, and obtain permits from the Michigan Department of Environment, Great Lakes, and Energy (EGLE).

Traditional solutions, such as building stormwater detention facilities, were impractical due to the lack of available land in the urbanized watershed. Storing enough water to prevent erosion would have required 32 acre-feet of detention, equivalent to a football-field-sized pond, which was not practical or cost-effective in the built-out area. Instead, the team engineered an innovative 3,416-foot Rosgen Type B channel, stretching from an 84-inch storm sewer outlet



84-inch diameter storm sewer outlet along the Ives Drain

at Ives Avenue to the Muskegon River. The design features riffles, pools, and over 8,000 tons of rock and rip rap that was barged across Lake Michigan from Wisconsin, to stabilize the streambed and banks. Rock riffle crest headers and wood cross vanes, crafted from on-site materials like root wads and timber, control the channel's steep 50-foot vertical drop, circulating energy and directing water to the center to prevent bank erosion.

The design leverages those large rocks, timber, and root wads to mimic natural roughness, slowing the water while protecting the banks.



Crews performing slope stabilization during the project construction

ETNA

SUPPLY COMPANY

ENGINEERED PRODUCTS FROM ETNA SUPPLY



Bank stabilization and drain restoration under construction

SOLMAX

Geotextile that is used to facilitate lateral drainage beneath paved or unpaved roads and parking lots while helping mitigate the effects of frost heave or expansive soils.



Drain restoration and bank stabilization under construction

MKB Stormwater Innovation

High-quality, innovative products for erosion and sediment control, stormwater management, and pollutant removal.



FILTYPLEX[®]

Advanced Tubular Filters

Filter Sock for
Sediment Control

FRYEFLOW

Inlet Filter Bag

Inlet Protection



EROSIONTECH

TRM/Erosion Blankets

Vegetation, expected to mature over time, adds further stability and enhance the aesthetics of the restored channel. Jackson Dirt Works began construction in July 2023, navigating tight spaces and coordinating with key stakeholders, including the City of Big Rapids, Ferris State University, and the Michigan Department of Transportation (MDOT). These entities collectively covered 71% of the \$4.2 million project cost, significantly reducing the financial burden on landowners within the drainage district.

Story continues on page 20

Contact Etna Supply for All Your
Geo & Erosion Control Needs
800-632-4576 | etnasupply.com

IVES DRAIN CONT.

The project has delivered substantial environmental benefits, drastically reducing sedimentation in the Muskegon River, improving water quality, and protecting aquatic ecosystems while protecting homes. Stabilized banks now safeguard city sewer lines, preventing potential contamination that could have harmed the river. Public engagement was a cornerstone of the project, with transparent communication through public hearings, a webinar-enabled Day of Review in March 2023, and regular updates shared via the Drain Commissioner's website and local media outlets.

The Ives Drain stands as a model of innovative engineering, cost-effective problem-solving, and stakeholder collaboration. By addressing decades of erosion, protecting homes and infrastructure, and enhancing the Muskegon River's health, the project ensures a safer, more resilient future for Big Rapids.



Finished drain after construction

PROJECT TEAM:

Karla Miller, Mecosta County Drain Commissioner

Engineer: Spicer Group, Inc.

Contractor: Jackson Dirt Works, Inc.

Other Firms: StreamsideEco and Fahey Schultz Burzych Rhodes



Restored Ives Drain after project completion



MICHIGAN'S DRAIN EXPERTS

Fahey Schultz Burzych Rhodes

4151 OKEMOS ROAD
OKEMOS, MI 48864 USA

TEL: 517.381.0100
FAX: 517.381.5051

DRAINS@FSBRLAW.COM

FSBRLAW.COM



ANDERSON, ECKSTEIN & WESTRICK, INC.
CIVIL ENGINEERS - SURVEYORS - ARCHITECTS

Stormwater & Floodplain Management
Municipal Engineering Bridge &
Structural Design
Hydrology & Hydraulic Design



Prein&Newhof
Engineers • Surveyors • Environmental • Laboratory

Designing resilient infrastructure for better stormwater management.

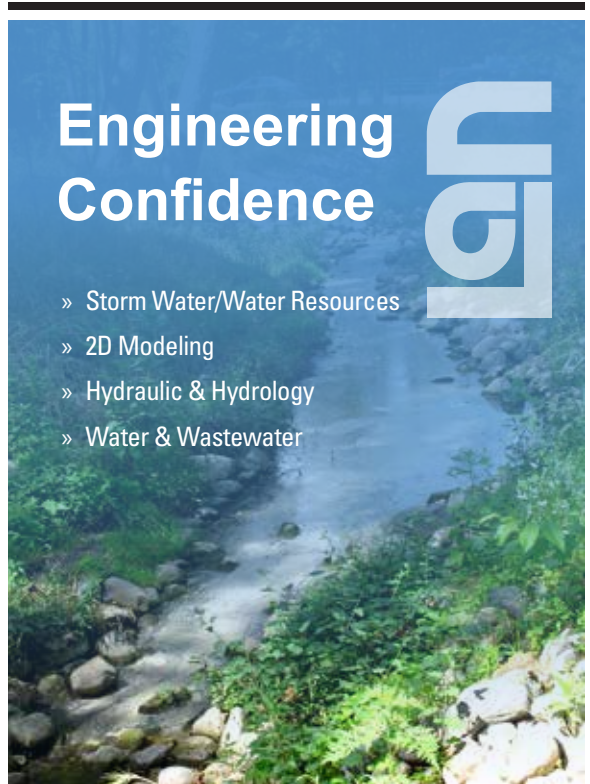


www.preinnewhof.com

Engineering Confidence



- » Storm Water/Water Resources
- » 2D Modeling
- » Hydraulic & Hydrology
- » Water & Wastewater




FKE Excellence in Infrastructure & Underground Engineering
www.fkengineering.com

- Geotechnical Engineering
- Civil & Structural Engineering
- Infrastructure Rehabilitation
- Tunnel & Shaft Design

LAN Lockwood, Andrews & Newnam, Inc.
A LEO A DALY COMPANY

www.lan-inc.com

Samir F. Matta, PE

517.819.2367

SFMatta@lan-inc.com

Engineered for the if, ready for the when.



Resiliency is the ability to successfully adapt and recover from adverse events like everyday stressors or severe weather. It is not a new imperative for ADS. Our business is proud to be leading the way for both resiliency and sustainability.



Long Service Life

Superior gasketed joints don't leak and securely move with the earth when stressed.



Unrivaled Strength

Future proof performance from an industry leader providing long term value when time is of the essence.



Sustainable Solutions

Our products are made from recycled materials and are less resource-intensive.

Build or upgrade your stormwater system with the future in mind.

For more information please contact Nicholas Karber
at 734-707-3967 or nicholas.karber@adspipe.com



adspipe.com

BROADBAND FOR ALL

Broadband Equity, Accessibility, and Deployment (BEAD) Program Update

By: Erik Tamlyn, P.E., Huron County

The Michigan High-Speed Internet Office (MIHI), part of the Michigan Department of Labor & Economic Opportunity (LEO), has a stated mission of creating a more digitally equitable Michigan where everyone can leverage technology to improve their quality of life.

The BEAD Program, a federally appropriated program in which Michigan has been granted \$1.559 billion, is expected to be a large part of carrying out that mission and impacting over 240,000 homes, businesses, and community anchor institutions.

Drain commissions will be impacted by BEAD through physical installation of fiber optic cable within drain rights-of-way. An important step to ensuring the successful installation of the fiber optic infrastructure is communicating early with developers and contractors regarding the requirements of drain commissions. MIHI has committed to providing drain offices with

As part of preparing for the significant roll-out of this significant program, the MACDC Broadband Committee recommends a plan of action that addresses concerns about construction plans, preventing and addressing damage, and processing increased permit volume.

information on the awardees of BEAD grants with the latest information indicating that Final Proposals for the grants are due September 1, 2025, with developer contract awards to follow and construction to begin in the spring of 2026.

As part of preparing for the significant rollout of this significant program, the MACDC Broadband Committee recommends a plan of action that addresses concerns about construction plans, preventing and addressing damage, and processing increased permit volume.

FINANCIAL ASSURANCES TO PREVENT AND ADDRESS DAMAGE

Having a developer agreement in place prior to beginning work can be an effective way to ensure that the prevention of damage and addressing damage when it occurs will be addressed by the developer. In addition, permit and inspection fees can be put in place to cover the added costs related to increased inspection efforts that will be incurred. MACDC associate members can help drain commissions needing assistance with either the legal aspects and/or review and inspection of proposed facilities.



A map of eligible locations for funding across the state. Source: Michigan Broadband Map

REQUIRING ADEQUATE DESIGN PLANS

With the amount of infrastructure to be installed, developers may want to provide only minimal details about the exact location and elevation of proposed facilities. Requiring design plans that feature information including accurate locations and elevations will be critical to preventing damage during construction. In addition, requiring as-built construction plans as part of the permitting process will serve to prevent future conflicts.

PERMIT PROCESSING

While other proprietary systems exist, the Broadband Committee wanted to specifically share information related to Oxcart Permit Systems (www.oxcartpermits.com). With much of the broadband infrastructure being placed in the public road rights-of-way, developers will already be familiar with Oxcart. The County Road Association of Michigan has a formal relationship with Oxcart for providing an online application system for both transport and right-of-way permits. This customizable permitting system is also a way for drain commissions to pass on processing costs to the users and developers.


The focus of the Broadband Committee moving forward will be to keep drain offices informed on BEAD Program developments and projects and establish communication between drain offices and developers once the grants are awarded.




ST REGIS
CULVERT INC.

202 Morrell Street
Charlotte, MI 48813
Ph. 517-543-3430

Corrugated Steel Pipe	Grader and Snow Plow blades
Max Flow Pipe	Aluminum & Steel structural plate
Dura Flow Dual Wall Pipe	Erosion Control Fabrics
CSP Fabrications	Campfire Rings



Applied Science, Inc.
Consulting Engineering



Providing Engineering Excellence Since 1984

Hydrologic / Hydraulic Modeling
Collection System Design
Water/Wastewater Treatment Design
Flow Meter Data Collection and Testing

313.567.3990 / www.asi-detroit.com



PROGRESSIVE COMPANIES

WATER RESOURCES

The water resources specialists at Progressive Companies have helped communities across Michigan develop workable solutions to complex lake and watershed management problems.

Services:

- Aquatic plant management oversight
- Drone surveys
- Geographic information systems analyses
- Hydro-acoustic mapping
- Lake and watershed management plans
- Limnological evaluations and diagnostic feasibility studies
- Natural shoreline design
- Online information and outreach
- Project organization and financing assistance
- Stormwater management studies
- Water quality monitoring
- Wetland delineations



weareprogressive.com



Connecting communities through thoughtful design.

County Drains
Intercounty Drains
Drain Inventories
Assessment Districts
GIS Mapping
Ecological Consulting
Geotechnical Engineering
UAS/Drone Inspections

PEA GROUP

HELPING POLLINATORS THRIVE:

HOW TO ACHIEVE EFFECTIVE HABITATS

By: Jason Fritz, Chris White, and Shawn Duke, Stantec

Pollinators are essential to ecosystems and agricultural systems, helping to maintain diverse plant and animal communities. A pollinator is any animal that helps move pollen from a plant's (male) anthers to its (female) stigma to fertilize the flower and produce fruit. Pollinators include bees (the most common type of pollinator), but can also include butterflies, moths, beetles, flies, and wasps. Even birds, bats and some small mammals play a role in pollination.

County Drain Commissioners oversee creeks and ditches to achieve proper drainage, protect water quality, and manage natural resources.

When evaluating stormwater solutions and drainage designs, it makes sense to consider ways to build habitat for pollinators due to the numerous benefits they provide to natural systems. Engaging experts can help achieve an ideal mix design, and guide installation and maintenance efforts for successful outcomes that perform well over time.

HOW TO DEVELOP THE RIGHT SEED MIX

Pollination isn't an intentional act for most pollinator species; it occurs naturally while pollinators are foraging for nectar or pollen from flowers. Therefore, when building habitat, it is important to include at least three species from each bloom period (spring, summer, and fall) so there are food sources throughout the year.

Select wildflowers are native to the region, as pollinators have adapted to these species over

thousands of years. In fact, some pollinators will only feed on a single species. The Michigan State University Extension Native Plants and Ecosystem Services site has many good references and a list of species native to different regions: Regional Plant Lists - Native Plants and Ecosystem Services

Seed mixes used for stormwater stabilization can be modified to provide pollinator habitat by adding native flowering species that are appropriate for the soil moisture and light conditions. Drainage ditches, stormwater basins and roadside swales typically have wetter soils

than typical prairie habitats, so take caution when adapting "pollinator prairie" mixes published online. When in doubt, check with your seed supplier to make sure the base mix and supplemental species are right for the habitat. Seed suppliers may also have mixes already formulated for your specific habitat.

With more than 300 different agricultural crops, Michigan is second only to California in terms of agricultural crop diversity. This makes pollinators especially important for Michigan's diverse agricultural crops like apples, blueberries, cherries and other fruits and vegetables.

Some plants function as hosts for pollinators during different development stages. The common milkweed (*Asclepias syriaca*) is a commonly known host plant for caterpillars of the Monarch butterfly. The caterpillars feed on milkweed leaves that contain chemical compounds called cardenolids, which make the Monarchs poisonous to predators.

Building habitat includes cover and overwintering areas, so good pollinator habitat mix will include grasses as well as flowers. Some pollinating insects will overwinter in the base of bunch



Integrating diverse native seed mixes into planned stormwater improvements helps maintain important habitat for many types of pollinators.

grasses, and others will build nests in the cavities of hollow stems, so include plants of many shapes and growth habits to provide habitat for many years.

Many cool-season grasses emerge from dormancy faster than native species, so a thick cover of cool-season grasses may out-compete native wildflowers. If adding supplemental wildflowers to a mix with a high application rate of aggressive grasses, you may need to reduce the rate of grasses to allow the native wildflowers to germinate.

PROPER INSTALLATION AND MAINTENANCE ARE KEYS TO LONG-TERM SUCCESS

Although installing pollinator seed mixes is similar to traditional turf-type mixes, proper site preparation is crucial. Since a good pollinator habitat contains both forbs and grasses, controlling invasive species is more difficult after establishment. Multiple broad-spectrum herbicide applications may be necessary prior to seeding to eliminate existing or adjacent weed populations.

After seeding, two to three maintenance mowings are recommended during the first growing season to control annual weeds. In subsequent years, mowing should only be

necessary once a year. Mowing should be conducted in late spring after hibernating pollinator species have emerged. Follow-up herbicide treatments may be required to eliminate invasive weeds that can't be controlled by mowing, so the maintenance contractor should have experience with native species to accurately target only the problematic invasive weeds. A wildlife-safe erosion control blanket will help protect the native seed from foragers and erosion during establishment.



When developing seed mixes, it's important to consider the needs of pollinators throughout different life stages. Matching host plants to local pollinators is critical.

**NATURE-BASED SOLUTIONS:
FULL-DELIVERY CAPABILITIES FOR
ECOSYSTEM RESTORATION**

Stantec has been providing nature-based solutions (NbS) for more than 30 years. Our NbS team includes restoration designers, construction managers, equipment operators, and field crews who complete stream and wetland restorations, native plant/seed installation, vegetation management, erosion control installation, prescribed burning, herbicide application for invasive species control, and post-implementation monitoring. Additionally, Stantec operates a native plant nursery in Walkerton, Indiana that propagates native plants and harvests seeds for over 350+ native plant species.

With these resources, our interdisciplinary experts guide clients through every stage of an NbS project—from site evaluations and planning to design, engineering, management, construction, monitoring, and plant supply. The result? An efficient project delivery process and cost-effective ecological solutions.



One of the most common and most efficient pollinators, with 465 species in Michigan, bees carry and transfer pollen from flower to flower.

2121 3 MILE RD., NW
WALKER, MI 49544
LREMI.COM
616-301-7888

**PROUDLY SERVING
MICHIGAN'S DRAIN COMMUNITY!**

PETE BUIURSTRA, P.E.
616-443-9593

DAN FREDRICKS, P.E.
616-862-3305

KYLE VISKER, P.E.
616-821-6619

Protecting Your Environment
Today For Tomorrow

- Lake Management Planning
- Aquatic Vegetation Surveys
- Water Quality Monitoring
- Phosphorus Mitigation
- Bathymetric Mapping
- Herbicide/Algicide Applications
- Natural Shoreline Restoration
- Terrestrial Plant Management
- Mechanical Weed Harvesting
- Fish Evaluations
- Fountains, Dock Mounts & Aeration Systems
- Establish Special Assessment Districts

Serving All of Michigan

• Ewart • Grand Rapids • Lansing • Gaylord

www.plmcorp.net | (800) 382-4434



FLEIS & VANDENBRINK

DESIGN. BUILD. OPERATE.

WATER SYSTEMS ENGINEERING

- Watermain Design & Construction
- Water Treatment Plant Design & Construction
- Water Filtration Improvements
- Water Booster Stations
- Water Reliability Studies
- Source Water Protection Systems & Security Planning
- Asset & Capital Development for Water Systems
- Water Tank Storage Design & Construction

www.fveng.com

Eng.
Engineering & Surveying
www.engdot.com

Experts in Stormwater Management of the Michigan Drain Code

Lansing	Grand Haven	Grand Rapids
4083 Grand Oak Dr., Suite A100 Lansing, MI 48911 Monday - Friday: 9am - 5pm P: (517) 887-1100	11000 Pezzone Road, Suite 100 Grand Haven, MI 49417 Monday - Friday: 9am - 5pm P: (616) 743-7079	2011 E. Saffron Ave. NE, Suite 201 Grand Rapids, MI 49306 Monday - Friday: 9am - 5pm P: (616) 743-3820

Clark Hill

Public Infrastructure
Clark Hill is uniquely qualified to assist with the myriad of legal issues that arise in the context of administering, financing, acquiring, constructing and maintaining public infrastructure projects. Our Michigan Public Infrastructure team brings decades of experience working with public agencies across Michigan in acquiring and developing public works projects, and ensuring legal compliance.

Public Finance
In coordination with the Public Infrastructure team, Clark Hill's Public Finance Group has comprehensive knowledge of federal and state laws that govern the issuance of tax-exempt debt as well as state and local election laws. Clark Hill has a wealth of experience in drafting all legal documents relating to the issuance of tax-exempt debt for drain and water resources commissioners.

Environmental & Natural Resources Law
Clark Hill's Environment, Energy & Natural Resources Group provides counselling and litigation experience with deep substantive knowledge in all areas of state and federal environmental laws and regulations. Our services include regulator counselling and defending environmental remediation and enforcement actions.

	Lauren K. Burton 248.988.5854 lburton@clarkhill.com
	Joe Colaianno 517.318.3029 jcolaianno@clarkhill.com
	Peter Ecklund 313.309.9451 pecklund@clarkhill.com
	James "Jay" J. Fleming 517.318.3038 jfleming@clarkhill.com
	Douglas R. Kelly 248.988.5590 dkelly@clarkhill.com

#simplysmarter clarkhill.com

This material may be deemed "Attorney Advertising."

ASSOCIATE MEMBER NEWS

FSBR Welcomes New Senior Attorney Daniel P. Bock to the Firm

Fahey Schultz Burzych Rhodes PLC is pleased to announce that Daniel P. Bock has joined the firm as Senior Attorney within our Water Resources and Municipal practice groups.



Bock

Dan brings nearly two decades of experience addressing some of Michigan's

most challenging environmental and natural resource issues. During his 17 years with the Michigan Attorney General's office, Dan served as Assistant Chief of the Environment, Natural Resources, and Agriculture Division where he led significant litigation and regulatory matters involving the Great Lakes, inland lakes and streams, wetlands, sand dunes, and oil and gas permitting and leasing. His role included serving as lead counsel for the State in high-profile cases related to the Line 5 pipelines and invasive Asian carp, and he was instrumental in establishing Michigan's Environmental Crimes Unit.

With a deep understanding of environmental law, regulatory frameworks, property and land use law, and administrative processes, Dan offers invaluable insight into the legal complexities public agencies face. FSBR clients will benefit from his expertise in guiding municipalities, utilities, and public bodies through permitting, enforcement, land use issues, and water-related disputes with confidence.

"I've had the opportunity to work alongside FSBR attorneys over the years and was always impressed by their client-focused approach," Dan said. "Their focus on smart, practical solutions really stood out to me. The kind of work they do—especially in environmental and municipal

law—lines up closely with my background, so this felt like a great fit and a natural next chapter in my practice."

At FSBR, Dan will advise clients on permitting strategies, lake level proceedings, riparian rights, ordinance drafting, land use, environmental and water resource issues, and litigation. Dan's arrival reinforces FSBR's commitment to serving Michigan's public agencies as trusted legal advisors—helping protect vital resources, manage risk, and advance the interests of communities statewide.



County Drain
Consulting & Design
Industrial Consulting
Civil & Municipal Engineering
Structural Design & Analysis
Land & Construction Surveys
Construction Materials Testing



810-984-5596

www.bmjinc.com

MACDC EVENT CALENDAR

OCTOBER 8

Southeast District Meeting
Ingham County, MI

OCTOBER 10

Northeast District Meeting

OCTOBER 16

Northwest District Meeting
Norton Shores, MI

OCTOBER 17

Southwest District Meeting
Cass County, MI

FEBRUARY 11-13, 2026

MACDC Annual Winter Conference
Grand Traverse Resort | Acme, MI

To place your event on this calendar, contact us at admin@macdc.us or 517.484.9761.

For the most up to date details visit, macdc.us/calendar/.



ej

Built with you in mind.



Aluminum access hatches by EJ are durable and built to last—while our patented SAFE HATCH® makes access, inspection, and maintenance easy and safe.

Learn more at
ejco.com/access-hatch
or call 800 626 4653
Made in the USA



THANK YOU ADVERTISERS

ADS	24
Anderson, Eckstein & Westrick, Inc	23
Applied Science, Inc.....	26
Bendzinski & Co. Municipal Finance Advisorrs	5
BMJ Engineers & Surveyors, Inc.	32
Cadillac Culvert Inc.....	14
Clark Hill PLLC.....	31
Dickinson Wright	IBC
EJ	33
Eng., Inc.	31
Etna Supply Company.....	21
Fahey Schultz Burzych Rhodes PLC	23
FK Engineering Associates.....	23
Fleis & VandenBrink	31
GEI Consultants	15
Hubbell, Roth and Clark, Inc.....	15
Jensen Bridge & Supply Company.....	14
Lockwood, Andrews & Newnam, Inc.	23
LRE (Land and Resource Eng).....	30
Miller Canfield	8
Natural Community Services.....	14
Northern Concrete Pipe	IFC
PEA Group.....	27
PLM Lake & Land Management Corp.....	30
Prein&Newhof	23
Progressive Companies	26
Restorative Lake Sciences.....	7
ROWE Professional Services Company	15
Savin Lake Services, Inc.	12
Spalding DeDecker.....	15
Spicer Group, Inc.....	OBC
St. Regis Culvert, Inc.....	26
Tetra Tech	17
Wade-Trim	7

OVER 50 YEARS OF OUTSTANDING SERVICE AS BOND COUNSEL TO DRAIN COMMISSIONERS



Laura M. Bassett | 248.205.5633
LBassett@dickinsonwright.com



Roger A. Swets | 616.336.1043
RSwets@dickinsonwright.com



Eric McGlothlin | 248.433.7566
emcglathlin@dickinsonwright.com

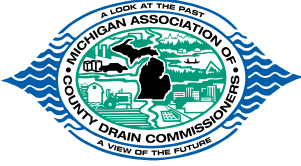


Jessica L. Wood | 616.336.1054
jwood@dickinsonwright.com



2600 W. BIG BEAVER RD., STE. 300 | TROY, MI 48084 | 200 OTTAWA AVE., N.W., STE. 1000 | GRAND RAPIDS, MI 49503

ARIZONA CALIFORNIA FLORIDA ILLINOIS KENTUCKY MICHIGAN NEVADA OHIO TENNESSEE TEXAS WASHINGTON DC TORONTO | DICKINSONWRIGHT.COM



PIPELINE

120 N. Washington Sq., Suite 110A
Lansing, MI 48933
www.MACDC.us



**LEADERS IN
WATER
RESOURCES
SINCE 1944**

RON HANSEN, P.E., P.S.
989.928.8021

NICK CZERWINSKI, P.E.
989.529.0256

TIM INMAN, P.E., P.S.
989.239.4907

STEVE ROZNOWSKI, P.E.
989.415.3317

PAUL FORTON, P.E.
989.529.8612

spicergroup.com